

IMAGE MEASUREMENT

OBJECT SIZING

ahlbergs.staging.westart.se/products/software/image-measurement



The Image Measurement software enables sizing of objects during the course of inspection. The software measures two-dimensional objects by mouse-clicking on a captured image; it is required that the user adds a known reference before measuring.

MORE INFORMATION ABOUT IMAGE MEASUREMENT

SPECIFICATIONS

APPLICATIONS

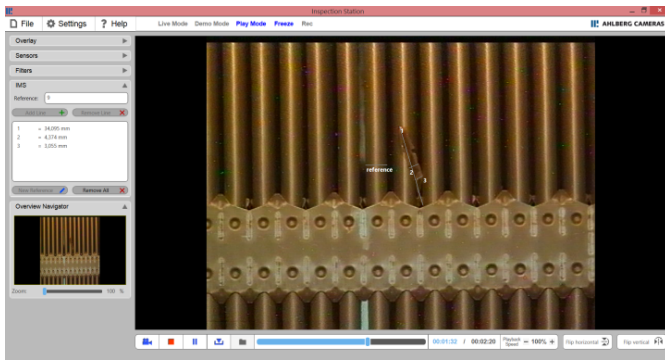
- The Image Measurement software is a part of the Inspection Station base package
- The Image Measurement software is also available as separate software

BENEFITS

- Includes a video overlay application, with which textboxes can be added to the picture
- Measuring accuracy is down to 0.1 mm where the camera-to-object distance, angle of view and the use of magnification decide the accuracy

We reserve the right to alter specifications without prior notice

IMAGE MEASUREMENT IMAGES



We reserve the right to alter specifications without prior notice