



AHL-LIGHT 10

LED WORK LIGHT

ahlbergs.staging.westart.se/products/lights/ahl-light-10



The AHL-LIGHT 10 is an underwater LED work light that can be used with robots and manipulators, or attached to tools for inspection. With a color temperature similar to traditional halogen lights, but with a significantly longer lifetime, it has many suitable applications.

MORE INFORMATION ABOUT AHL-LIGHT 10

APPLICATIONS

- Can be attached to tools, robots, manipulators and more when working with internal parts and fuel assemblies in reactors and fuel pools.
- Ideal for use during inspections such as a 4-face fuel inspection
- Powered by a camera control unit or a lighting power unit

BENEFITS

- 9 000 lumen light output
- Color temperature, suitable for inspections
- Low maintenance cost due to its long life-time

SPECIFICATIONS

PHYSICAL CHARACTERISTICS

Width	93 mm
Length	95 mm
Weight	1 kg
Housing material	Stainless steel EN 1.4301, AISI 304/AISI 316
Front Glass Material	Polycarbonate

LIGHTING FEATURES

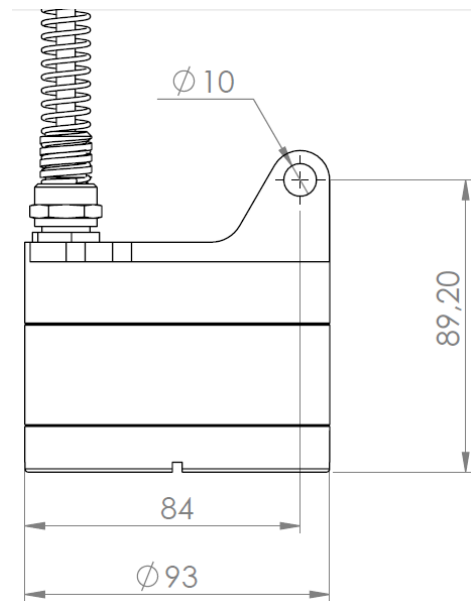
Type	LED
Typical luminous flux	9 000 lumen
Life time	>50 000 h
Lighting Beam Angle	64°

ENVIRONMENTAL TOLERANCES

Radiation tolerance (total dose)	
Maximum operating temperature	50°C, 70°C for short periods (122°F, 158°F)
Water Tightness	3.5 bar

We reserve the right to alter specifications without prior notice

AHL-LIGHT 10 IMAGES



We reserve the right to alter specifications without prior notice